

# LINK-PP

LINK-PP INT'L TECHNOLOGY CO., LIMITED

[www.link-pp.com](http://www.link-pp.com) 連普國際科技有限公司

A-B Building Jia An Industrial Park Chenjiang Town Huizhou, Guangdong 516229 China



## Part One

**LINK-PP** is a professional designer and manufacturer for magnetic components of IOT .Founded in 1997, Owing 1100 people and 9200 k monthly Capability, as well as advanced production equipment and precision cutting-edge network analysis testing instruments imported abroad ,we have ISO9001:2015 international quality system certification, ROHS environmental certification, UL, Reach, and ISO14001:2015 environmental certification system .We have strong production strength and research and development ability, strict quality management operation, high-quality management team,Reasonable price, which ensure that we can provide complete magnetic component solutions and strong technical support to your actual needs.

## Part Two

### Main Products

RJ45 Modular Jack & USB Jack  
10/100M/1G/2.5G/5G/10G Discrete Magnetic  
10/100M/1G/2.5G/5G/10G Magnetic RJ45  
T1/E1/T3/E3 Transformer  
Optical Transceivers  
SFP/SFP+ Cage&Receptacle Connector



## Part Three

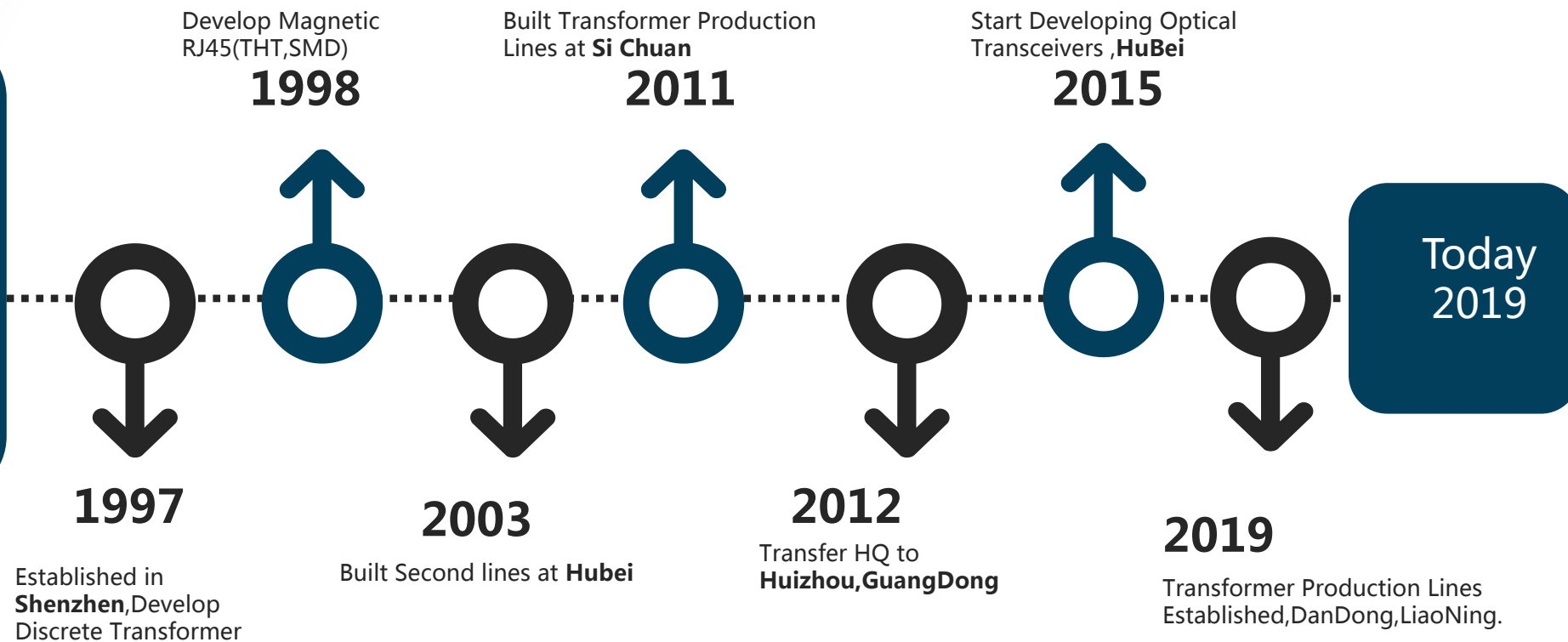
### Applications

**Telecommunications, Internet of things,  
Consumption, Medical, Industrial Control,  
Military .**

(Such as : Network Card, Hub, Router, Switch,  
Embedded Motherboard, Optical Terminal, Blu-  
ray,DVD,Webcams, Hard Disk Players, Internet Of things  
Gateways,VoIP Gateways,PoE Repeater,  
Switching Power.)

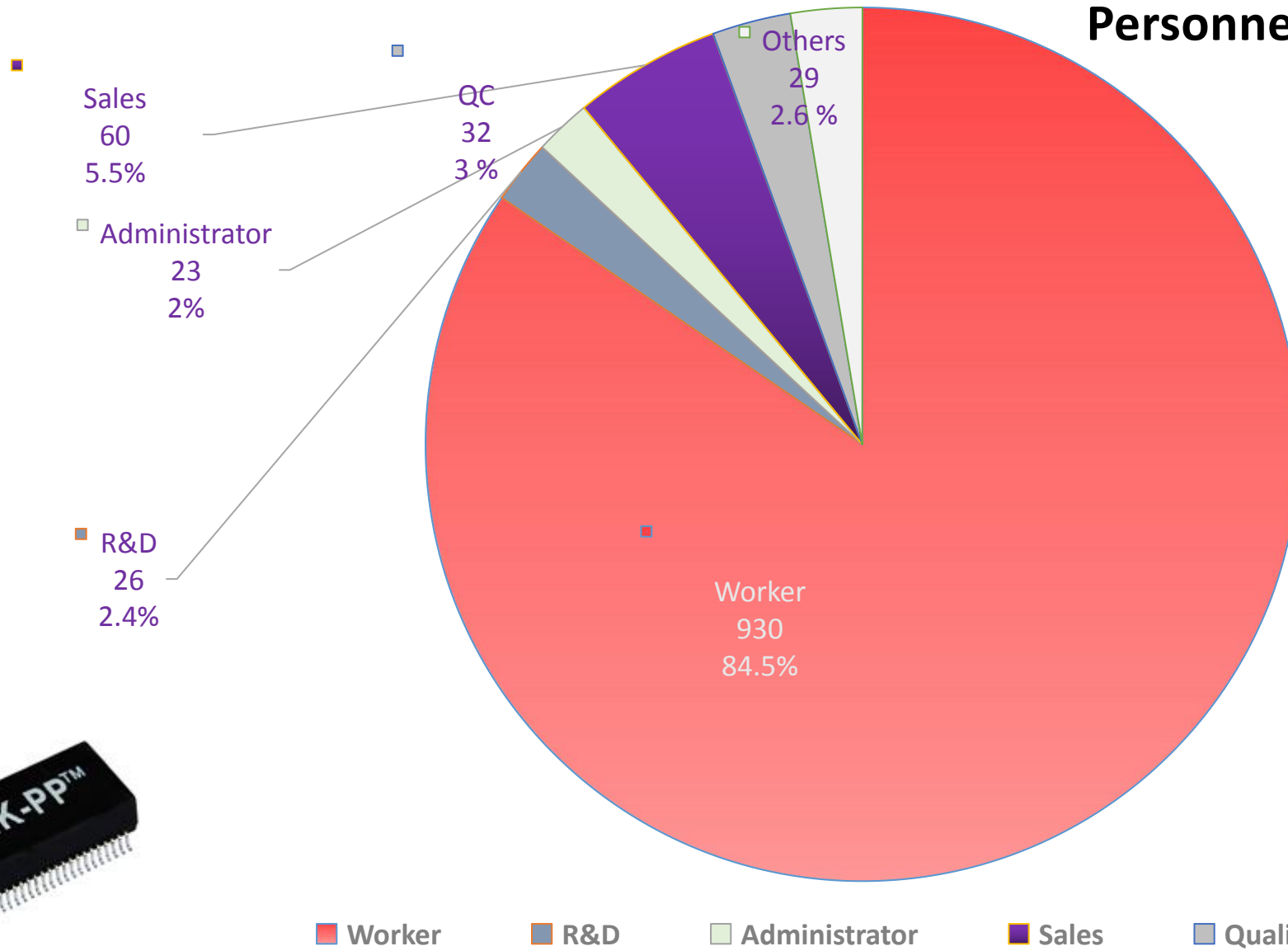


# 历史





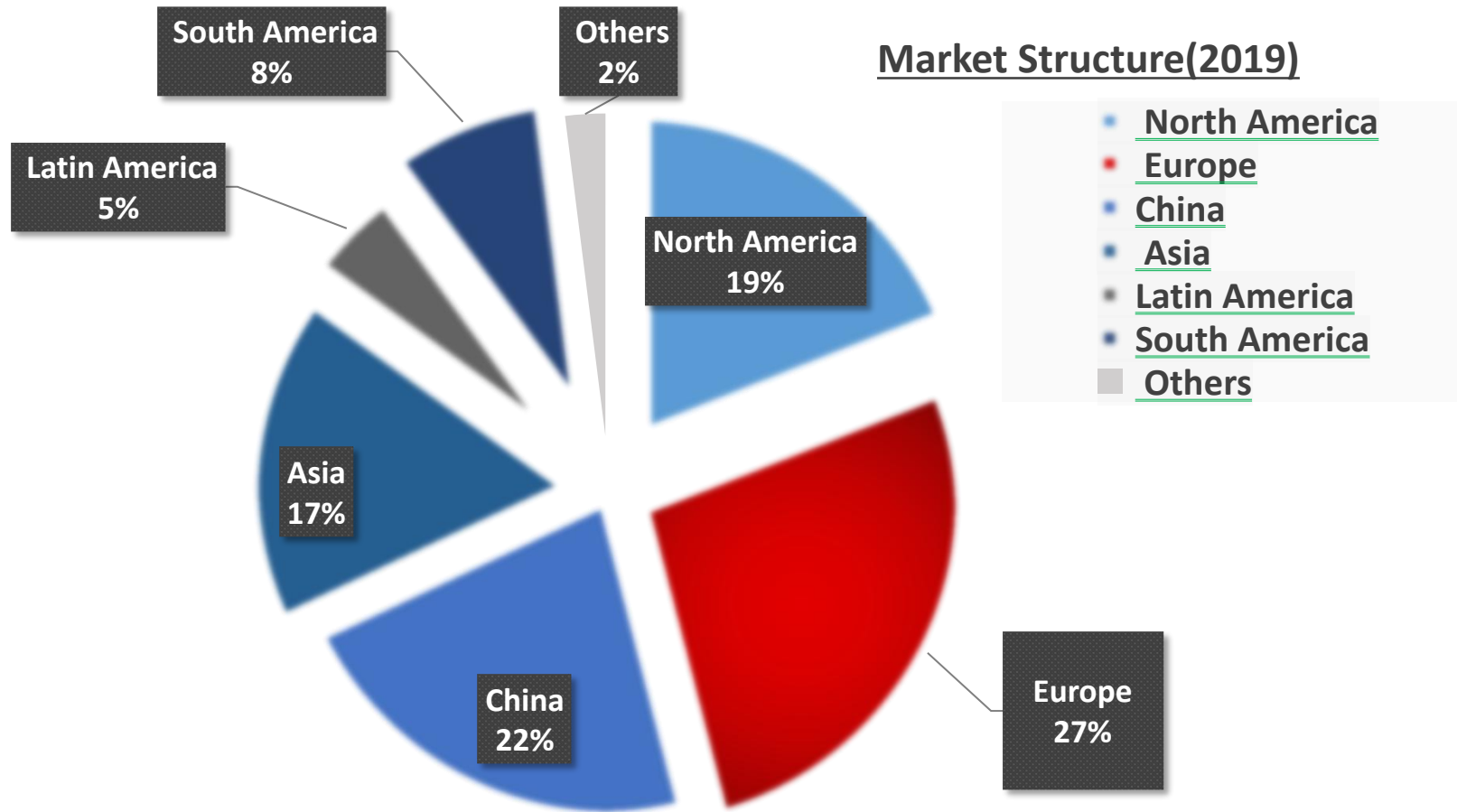
# 2019 Personnel Structure

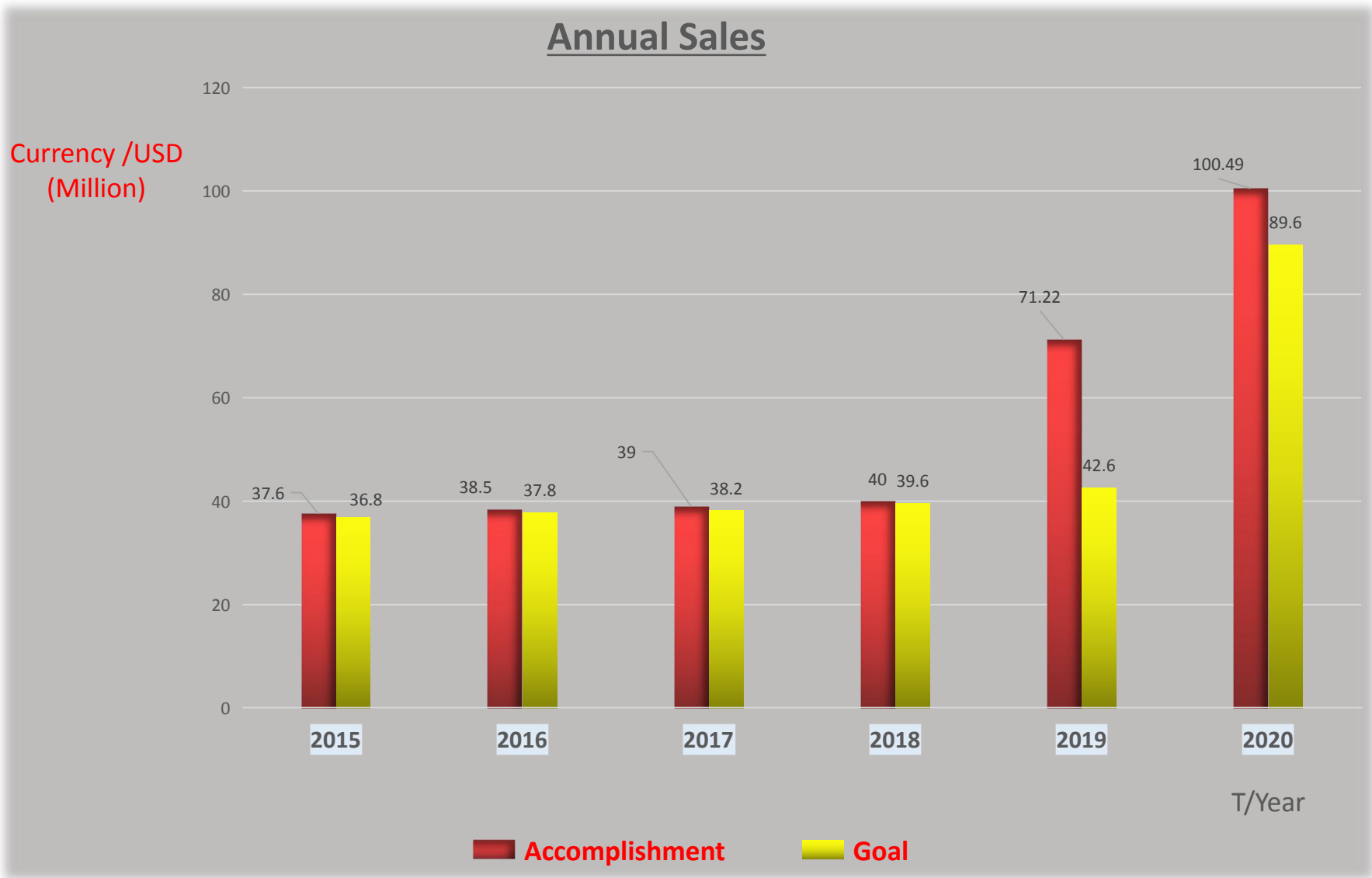


# Global

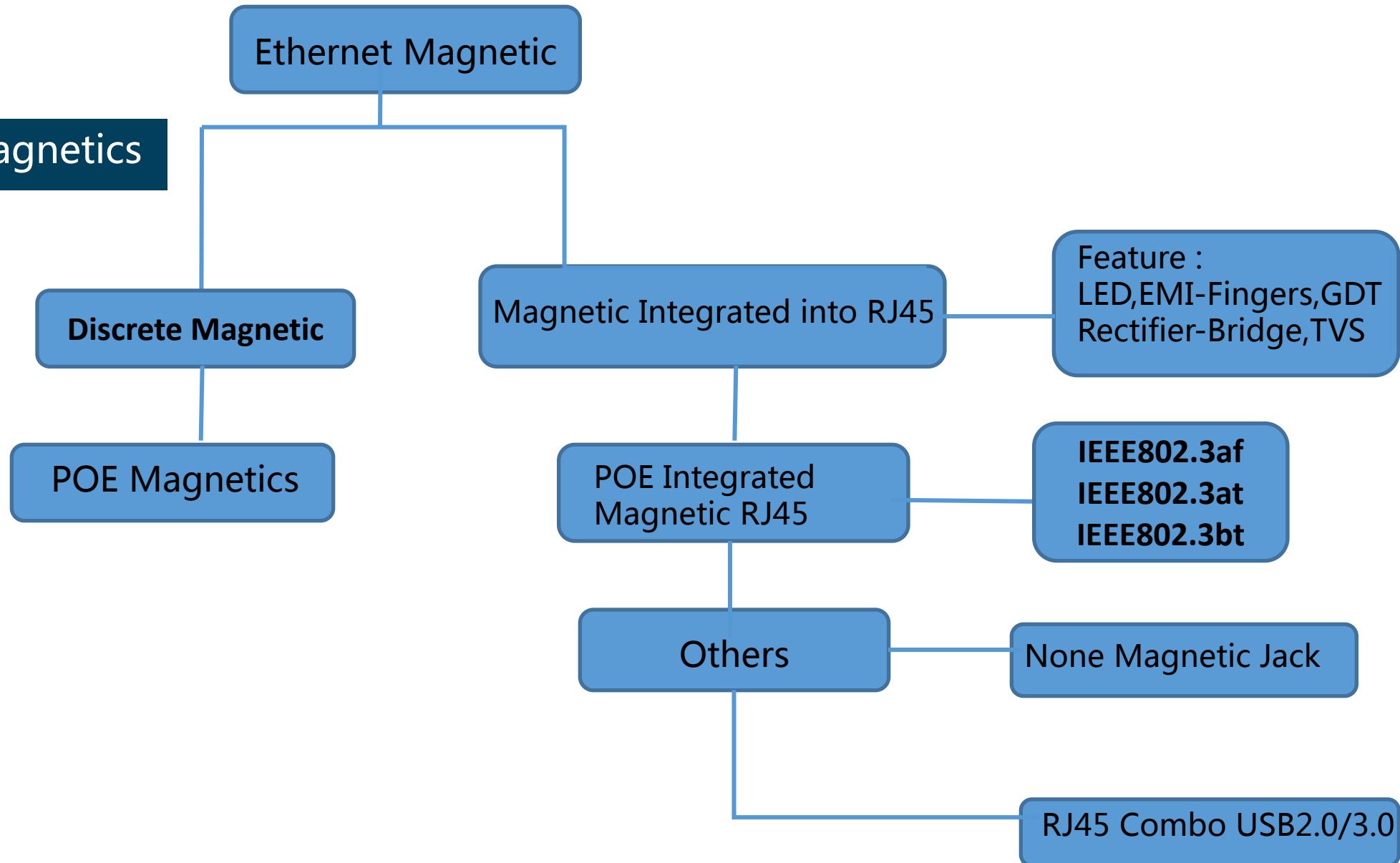
## Market distribution

Europe and America Mainly  
Asia and the Middle East Secondly





## Discrete Magnetics



We have 4 solutions for customer design:

1: Integrated RJ45 Connector(RJ45 Integrated lan transformer)

Advantages: Save PCB space and solder time for customer

Disadvantages: Product cost higher and lead time longer

This solution suitable for the customers who have enough Budgetary

2: RJ45 + Lan transformer

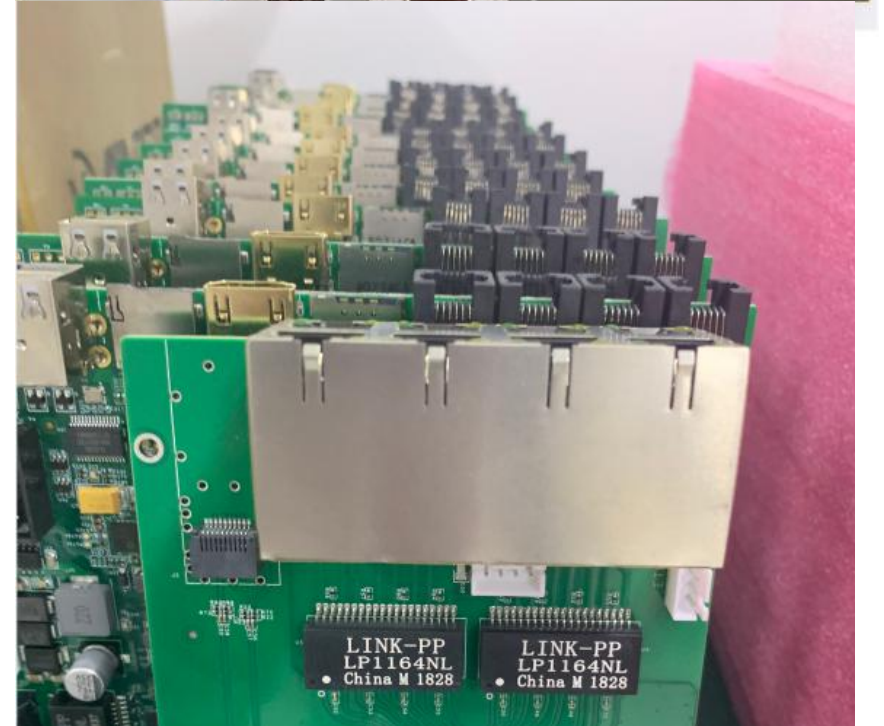
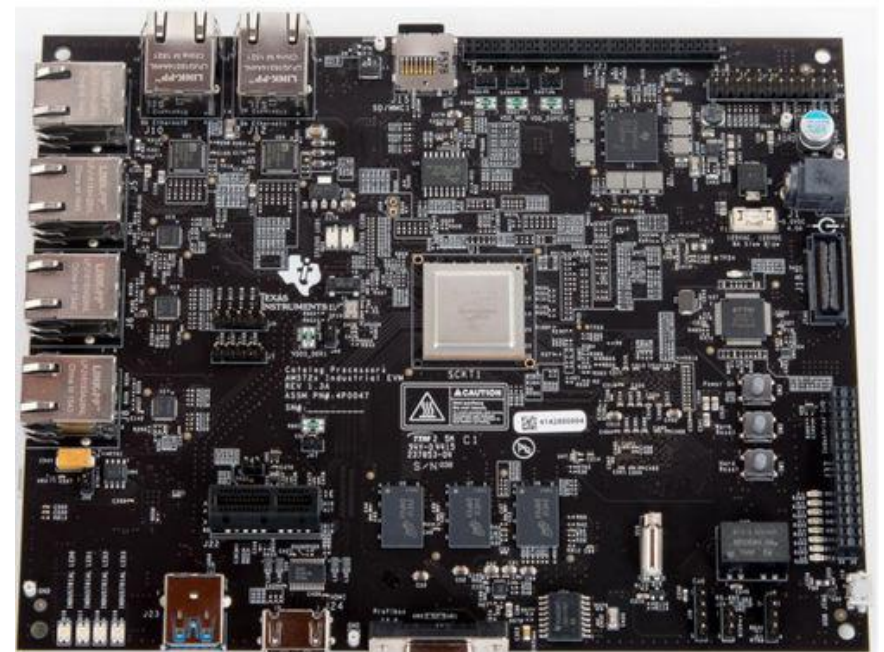
Advantages: Product cost better and lead time faster

Disadvantages: Waste PCB space and solder time for customer

This solution suitable for the customers who do not have enough Budget and PCB have much more space

3: ONLY Lan transformers, no RJ45

4: ONLY RJ45, without magnetics(Small market and lower value)



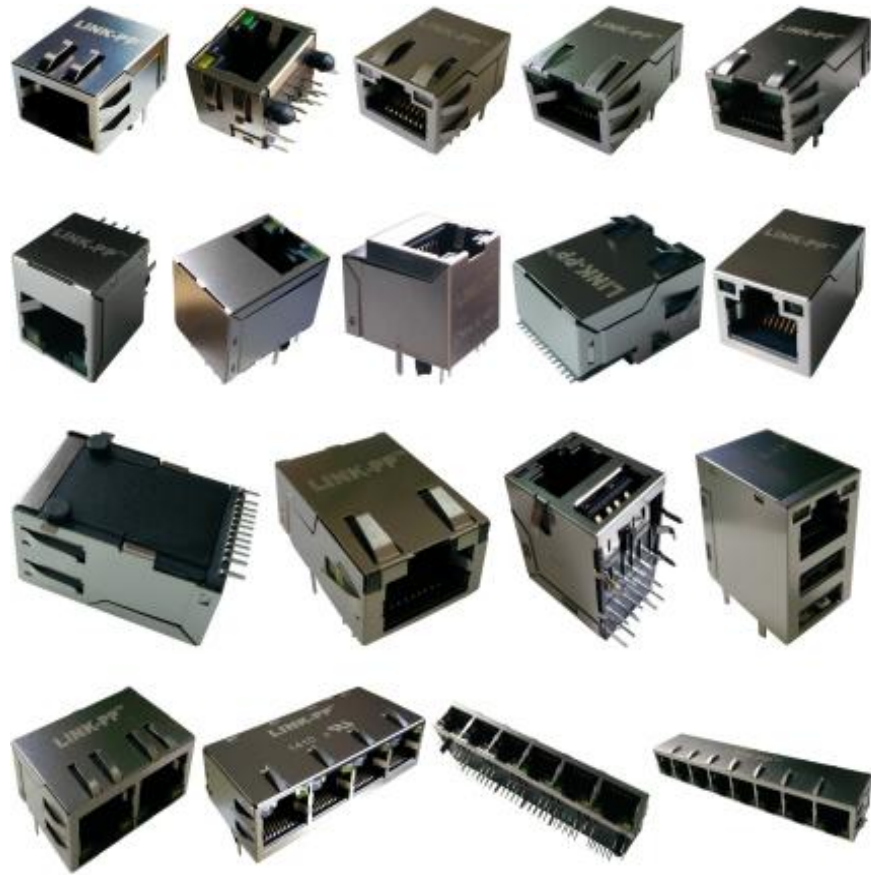


Please Search What You Want LINK-PP

Search

Product Type	Speed	Application	Port Type	Package	Latch Option	Others	
RJ45 Mag Jack	10/100 Base-T	Ethernet(non PoE)	1x1	THT	Tab up	LED	
	1000 Base-T	PoE	1xN [N=2,4,6,8]	SMT	Tab down	Bob-Smith	
	2.5G Base-T	PoE+	2x1	THR	Up & Down	DC Rectifier	
	5G Base-T	PoE++	2xN[N=2,3,4,6,8]	Low Profile		GDT	
	10G Base-T		Vertical	Mid PCB		TVS	
			RJ45 With USB				
Product Type	Speed	Application	Port Type	Package			
Lan Discrete Module	10/100 Base-T	Ethernet(non PoE)	Single Port	THT			
	1000 Base-T	PoE	Dual Port	SMT			
	2.5G Base-T	PoE+	Quad Port	Low Profile			
	5G Base-T	PoE++					
	10G Base-T						
Product Type	Speed	Orientation	Port Type	Package	Latch Option	LED	Shield
RJ Modular Jack	Cat3,Cat5,Cat5e,Cat6	90°	1x1	THT	Tab up	With	With
(None Magnetic)		180°	1xN [N=2,3,4,5,6,8]	SMT	Tab down	Without	Without
		45°	2x1	THR	Up & Down		
			2xN[N=2,3,4,6,8]	Low Profile			
				Mid PCB			

# Product Pictures



# Product Category

## RJ45 ( Integrated & Separate )

Integrated RJ45 Connector >

Lan Transformer >

Modular Jack >

Integrated RJ45 Connector >

Lan Transformer >

Modular Jack >



### Single Port RJ45 Connector

10/100 Base-T RJ45 Connector  
1000 Base-T RJ45 Connector  
2.5G Base-T RJ45 Connector  
5G Base-T RJ45 Connector  
10G Base-T RJ45 Connector



### SMT RJ45 Connector

10/100 Base-T RJ45 Connector  
1000 Base-T RJ45 Connector



### Low-Profile RJ45 Connector

10/100 Base-T RJ45 Connector  
1000 Base-T RJ45 Connector  
2.5G Base-T RJ45 Connector  
5G Base-T RJ45 Connector  
10G Base-T RJ45 Connector



### Vertical RJ45 Connector

10/100 Base-T RJ45 Connector  
1000 Base-T RJ45 Connector



### RJ45 Connector with USB

10/100 Base-T RJ45 Connector  
1000 Base-T RJ45 Connector



### Multi-Port RJ45 Connector

1x2 Port RJ45 Connector  
1x4 Port RJ45 Connector  
1x6 Port RJ45 Connector  
1x8 Port RJ45 Connector



### RJ45 Jack without Magnetics

10P10C RJ45 Jack  
8P8C RJ45 Jack



### RJ11 Jack

6P6C RJ11 Jack  
6P4C RJ11 Jack  
6P2C RJ11 Jack  
4P4C RJ11 Jack

# Product Category

## Lan Transformer

Integrated RJ45 Connector



Lan Transformer



Modular Jack



### Single Port Lan Transformer

10/100 Base-T Lan Transformer  
1000 Base-T Lan Transformer  
2.5G Base-T Lan Transformer  
5G Base-T Lan Transformer  
10G Base-T Lan Transformer



### Dual Port Lan Transformer

10/100 Base-T Lan Transformer  
1000 Base-T Lan Transformer  
2.5G Base-T Lan Transformer  
5G Base-T Lan Transformer  
10G Base-T Lan Transformer



### Quad Port Lan Transformer

10/100 Base-T Lan Transformer  
1000 Base-T Lan Transformer  
2.5G Base-T Lan Transformer  
5G Base-T Lan Transformer  
10G Base-T Lan Transformer

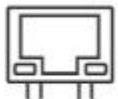


### Low-Profile PCMCIA Transformer

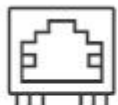
10/100 Base-T Lan Transformer  
1000 Base-T Lan Transformer  
2.5G Base-T Lan Transformer  
5G Base-T Lan Transformer  
10G Base-T Lan Transformer



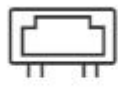
2.5G/5G/10G  
Connector



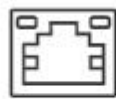
PoE/PoE+/PoE++  
Connector



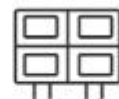
With Tvs and  
Diode



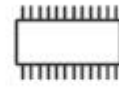
Low Profile  
Connector



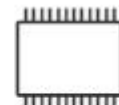
SMT RJ45  
Connector



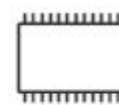
Stacked RJ45  
Connector



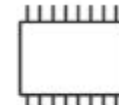
2.5G/5G/10G  
Transformer



PoE/PoE+/PoE+  
Transformer



Hipot 2000-6000  
Vrms



Low Profile  
Transformer



# Product Category

## Hot Deals ( Integrated RJ45 )



### **Single port 10/100M Magjack:**

LPJ0011, LPJ0012 , LPJ10, LPJ16 series ...

LPJ0012GDNL, LPJ1014AHNL

### **Single port 10/100M Magjack for POE application:**

LPJ0514 , LPJ16204, LPJK2001, series ...

LPJ0514GENL, LPJ16204AENL

### **Single port 10/100M Low-profile Magjack:**

LPJK7001 , LPJK7401, series ...

LPJK7001AGNL or LPJK7401AGNL

### **Single port 10/100M SMT Magjack:**

LPJ3011 , LPJ19911, series ...

LPJ3011ABNL, LPJ19911ADNL



### **Single port 10/100/1000 M Magjack:**

LPJG0820, LPJG16320 , LPJG17301, series ...

LPJG0820HENL, LPJG16320BENL

### **Single port 10/100/1000 M Magjack for POE application:**

LPJG0926, LPJK6064 , series ...

LPJG0926HENL, LPJK6064AONL

### **Single port 10/100/1000 M Low-profile Magjack:**

LPJK7036 , LPJK7003 , series ...

LPJK7036A98NL

### **Single port 10/100/1000 M SMT Magjack:**

LPJG19 , series ...

LPJG19801DNL



# Product Category

## Hot Deals ( Integrated RJ45 & Separate )



### **Multiple Port 10/100M Magjack:**

LPJ26204, LPJ46204, series ...

LPJ26204AENL, LPJ46204AENL

### **Multiple Port 10/100M Magjack + POE:**

LPJ46514, series ...

LPJ46514AENL

### **Multiple Port 10/100/1000M Magjack:**

LPJG26801 , LPJG46901, series ...

LPJG46901DNL

### **Multiple Port 10/100/1000 M Magjack + POE:**

LPJG46928 , series ... LPJG46928BENL

**all support 1xN , 2XN ,etc**

### **Vertical 10/100M Magjack:**

LPJD4012,LPJD0011, LPJD5011, series ...

LPJD4012BENL, LPJD5011BENL

### **Vertical 10/100/1000M Magjack:**

LPJD4713, LPJD0711, series ...

LPJD4713BENL

### **Vertical Magjack with POE:**

LPJD4514 , series ... LPJD4514BENL

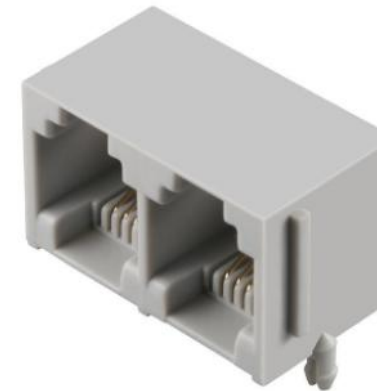
**all support diode, TVS , ESD , etc.**



10P10C/8P8C

SMT

1XN, 2XN...



RJ11 series:

6P6C

6P4C

6P2C

4P4C

4P2C

# Product Category

## Hot Deals ( Lan transformer )



### **10/100M :**

1 port: LP41604ANL, LP1102NL

2ports: LP2064NL

4 ports: LP1164NL, LP5020NLR

### **10/100M POE:**

1 port: LP2019ANL

2ports: LP6062ANL, LP5009NL

4 ports: LP5018ANL

### **1000M:**

1 port: LP5004NL, LP82440ANL

2ports: LP5014NL, LP5020NLR

4 ports: LP5025NL

### **1000M POE+/POE++:**

1 port: LP6062ANL, LP6096ANL, LP6090ANL

2ports: LP6080ANLE

### **10G**

1 port: LP7016ANL, LP72423ANL

2ports: LP74801ANL

**10G POE+:** LP72431ANL

The Operating temperature : -40°C~ +85°C

16pin , 24pin , 40pin , 48pin, 72pin

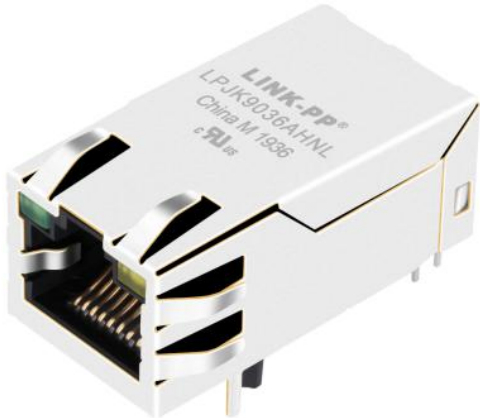




# Product Category

## 10G ( Magnetic component )

Product Name	LINK-PP P.N	Specification
RJ45	LPJM4938GENL	2.5G single port 21.3mm Tab-down
	LPJM26938AENL	2.5G 1X2 port 21.3mm Tab-down
	LPJG164934AENL	2.5G single port 21.3mm Tab-UP
	LPJK25036AHNL	2.5G single port 33mm Tab-UP
	LPJK9035AHNL	5G single port 33mm Tab-UP
	LPJK9036AHNL	10G single port 33mm Tab-UP
	LPJK9493AHNL	10G single port 33mm Tab-UP POE++
Lan transformer	LP5016ANL	2.5G
	LP5017ANL	2.5G POE+
	LP72432ANL	2.5G POE+
	LP6017ANL / LP72421ANL	5G / 5G POE
	LP7016ANL / LP72423ANL	10G
	LP72431ANL	10G POE+

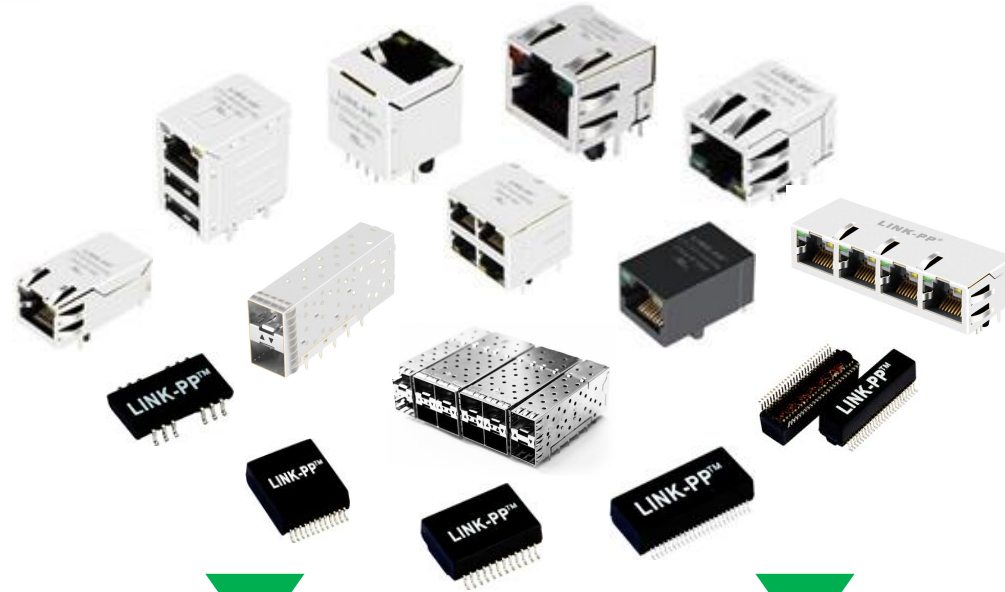




# Application

## Internet Of Things

### LINK-PP



#### Medical

Surgical equipment  
Patient care  
The handheld device  
Operation generator  
Home dialysis machine

#### Security

Alarm  
Smart Camera  
Monitoring system  
Intercom  
Entrance Guard System

#### Networking

Router  
Server  
Switches  
Network Firewall  
SMPS

#### Telecom

Set-top box  
Smart home  
Smart meters  
Mobile phone  
Satellite  
Optical network  
Handheld device

#### Consumer

Digital camera  
Video recorder  
GPS  
Media player  
Game Controller  
Projector  
TV

#### Industrial I/O

Industrial PC  
Embedded Main board  
Ethernet Control automation  
Fieldbus system  
I/O Controller

# Characteristic Advantages

1



Quality is the Soul  
Top In China  
100% Tested

2



Costs-Competitive  
Competitive Labor Fee mainland

3

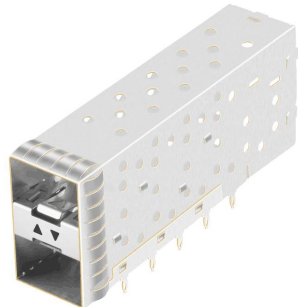


Faster Lead Time  
Comfortable Service  
Free Samples  
Flexible Term

# LINK-PP

## How We Do

1. Offer Best Suggestions For Your New Projects
2. 100% Equivalent & More Competitive Than Other Brand Parts Like Below Used On Your Running Projects



# Strategic Partner

## LINK-PP

### Texas Instruments

The world's leading semiconductor multinational, known for the development, manufacture and sale of semiconductor and computer technology, mainly engaged in innovative digital signal processing and analog circuit research, manufacturing and sales.

---

The world's largest manufacturer of digital signal processors and analog circuit components

### Qualcomm

Founded in 1985, the global leader in the research and development of 3G, 4G and 5G technologies, has licensed technology to a number of global manufacturers, covering all the world's telecom equipment and consumer electronics equipment brands

---

Forbes ranked no. 32 on the global digital economy 100 list of 2019

### Intel

The world's largest maker of PC components and cpus, founded in 1968, has a history of 50 years of product innovation and market leadership.

---

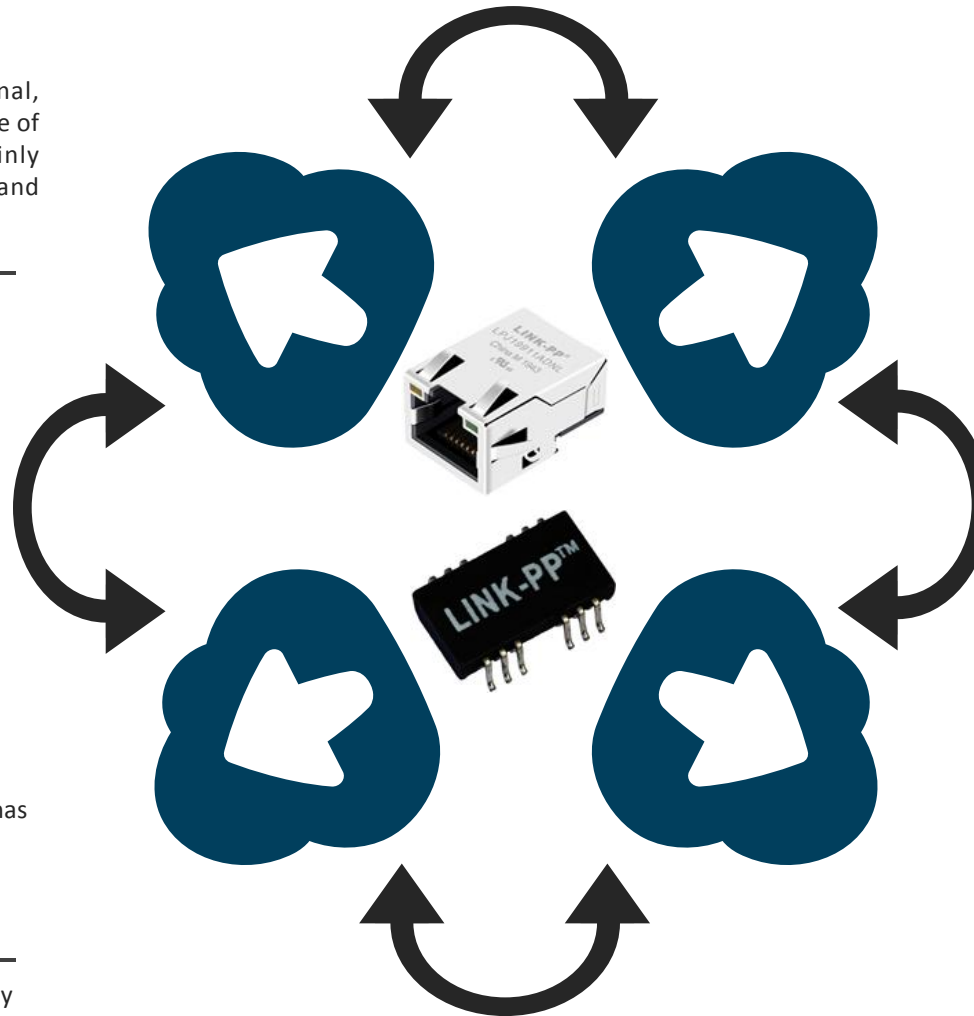
Top 13 on 2019 of 100 Global brands

### Global EMS

Flextronics, Jabil , Sanmina, Celestica ,Wistron New Kinpo Group , Samsung,Ventrure,Plexus

---

Top 50

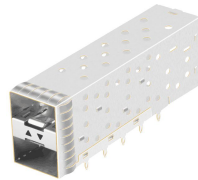




# Successful Customers

## LINK-PP

Standing Near Excellent



## Successful Case .1

### Ti BeagleBone Black Board project [www.ti.com/tool/beaglebk#0](http://www.ti.com/tool/beaglebk#0)

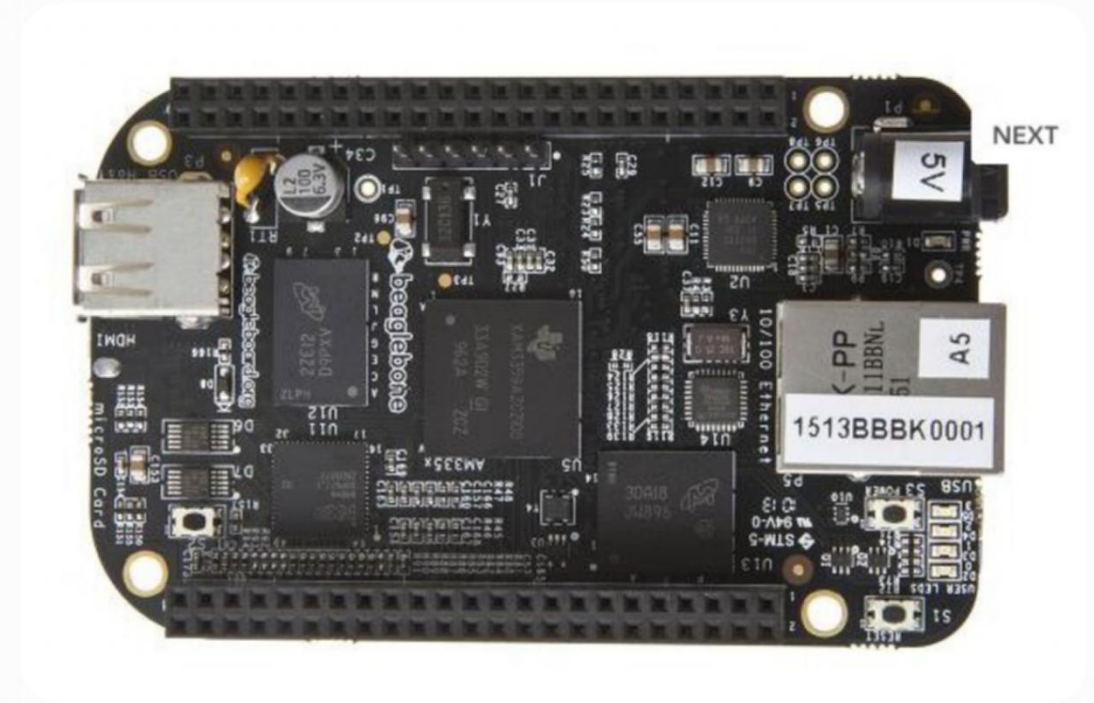


#### **BeagleBone Black is an extremely scalable development board.**

Using Texas Instruments' low-cost Sitara AM3358 1-ghz ARM cortex-a8 processor, at half the price of the original BeagleBone board and with all the necessary components, BeagleBone black offers high performance hardware and software technology well below comparable development platforms on the market.

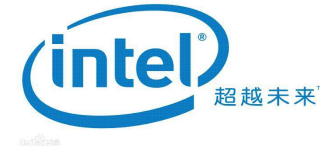
Peripherals:

- >5V dc power supply interface
- >Ethernet interface 10/100Mbps **LPJ0011BBNL**, LINK-PP.
- >The power button reminds the processor to start the power off sequence
- >USB Client mini can also be connected to the computer for power supply
  - Biological power and reapply the power to the board.
- >Boot Switch ,Used to convert the boot system from the SD card,removing power and reapplying the power to the board
- >4User leds
- >Micro HDMI: connect the display screen
- >USB Host: connect different USB devices, wireless network card, mouse, etc



# Successful Case .2

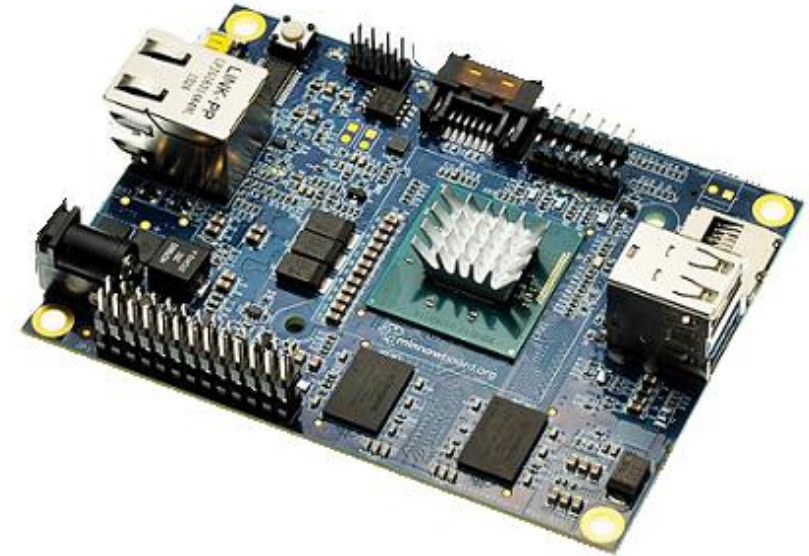
Intel Project : MinnowBoard MAX hardware development board



<https://www.intel.com/content/www/us/en/architecture-and-technology/unified-extensible-firmware-interface/bios-firmware-update-video-tutorial.html?wapkw=minnowboard>

## Minnowboard MAX

Minnowboard MAX MinnowBoard MAX is a compact, affordable, and powerful development board that offers open hardware design and endless customization and integration potential for professionals and manufacturers. It uses 64-bit Intel® atom™ E38xx series SoC CPU, integrated Intel HD graphics card. Video and digital audio output is available via HDMI separately from analog audio via the expansion board. Other I/O includes: mini, SATA2, USB3.0 (host), USB2.0 (host), gigabit Ethernet, I2C, SPI, and serial debugging via FTDI cable. Eight buffer GPIO pins work well, with 2 pins supporting PWM.



Assessment tool: FH8065301567311

Core: Intel atom E3825

Interface type: Gigabit Ethernet (LPJG16314A4NL, LINK-PP)

HDMI, support microSD, serial port, USB

Operating voltage: 5 V

Brand: MinnowBoard by CircuitCo

Description/features: MinnowBoard MAX dual core, 2GB ram

Dimensions: 73 mm x 99 mm

Frequency: 1.33 GHz

Maximum operating temperature: +70°C

Minimum operating temperature: 0°C





# RoHS

## Green Environmental Protection

### Sustainable Development >>>>>>>

All products meet ROHS/Reach requirements

All products are UL certified

We adopt and promote energy-saving and efficient production technology

We have passed ISO 14001:2015 environmental management system certification;

We take an active part in public welfare undertakings.





# Contact Us

**LINK-PP INT'L TECHNOLOGY CO., LIMITED .**

Add : No.54, South of Jinhu Roud, Chenjiang Town,  
Huizhou City, 516229,Guangdong, China

Tel : 86-752-3322917

Mob : 86 13434796102

Wechat & Whatsapp : 86 13434796102

Email : [jason@link-pp.com](mailto:jason@link-pp.com)

Web : [www.link-pp.com](http://www.link-pp.com)