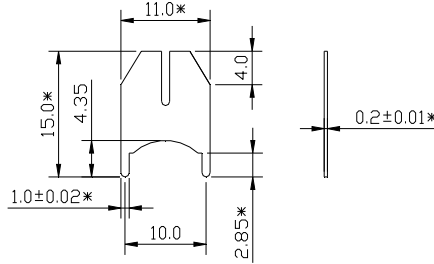
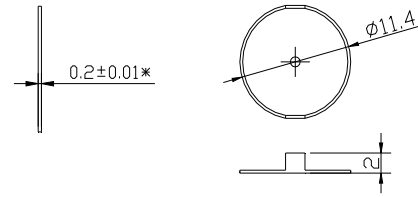


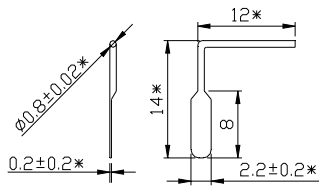
HC01



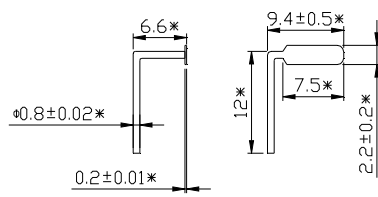
HC02



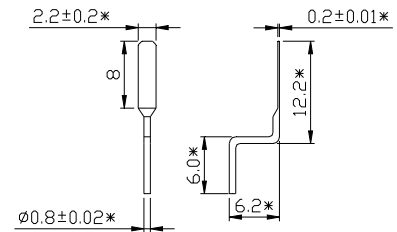
HC03



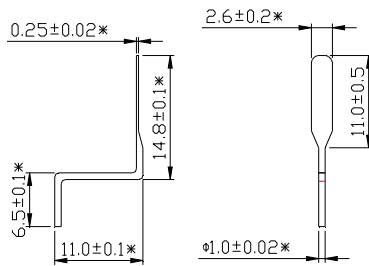
HC08



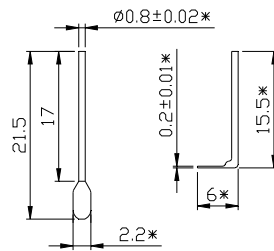
HC09



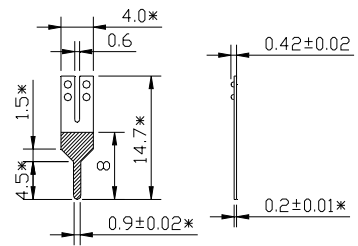
HC14



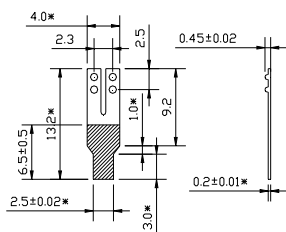
HC13



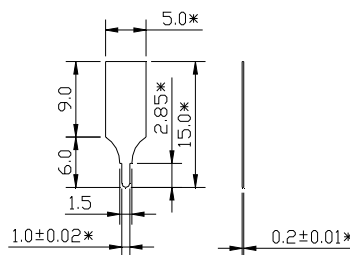
HC15



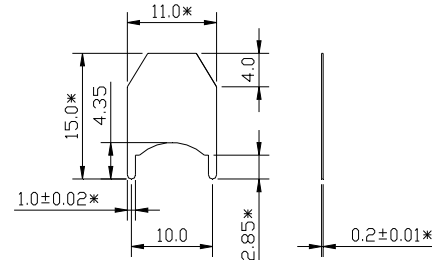
DZR-01



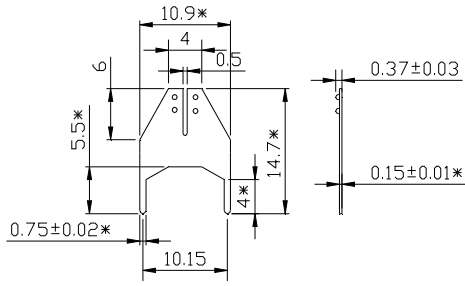
HC23



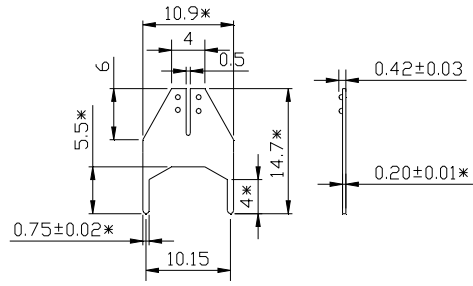
HC21



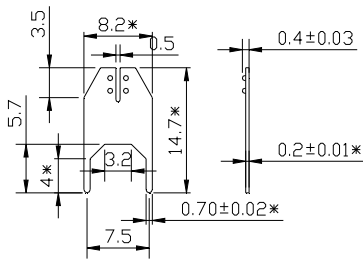
HC22



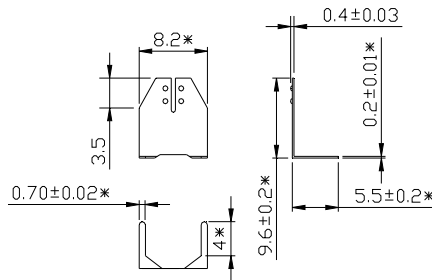
HC04(厚0.15mm)
EEMB专用



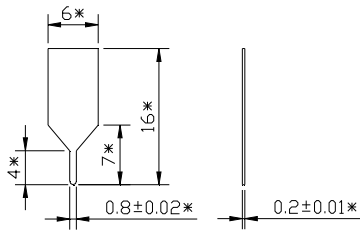
HC04(厚0.20mm)



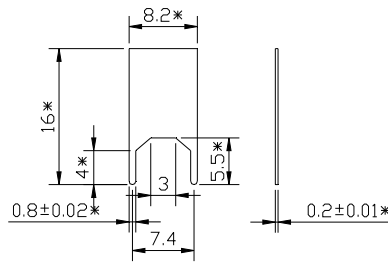
HC10



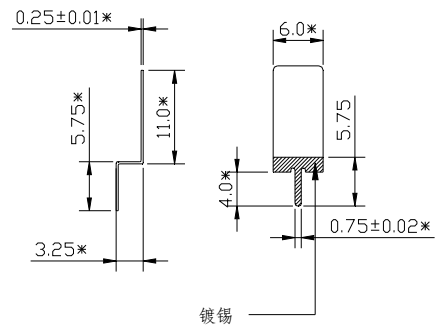
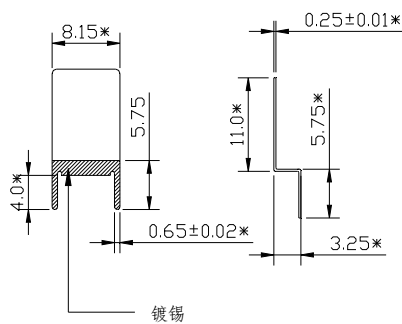
HC10 啤弯型



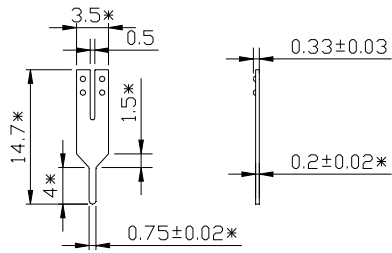
HC17



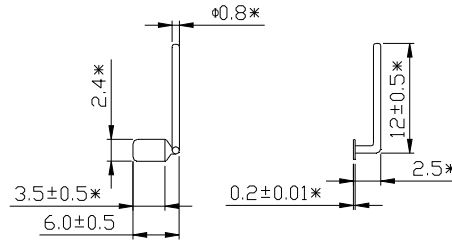
HC16



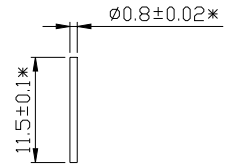
HC25



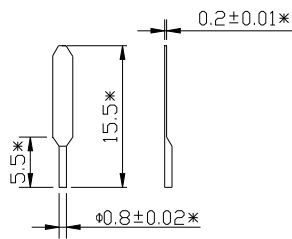
HC05(厚0.20mm)



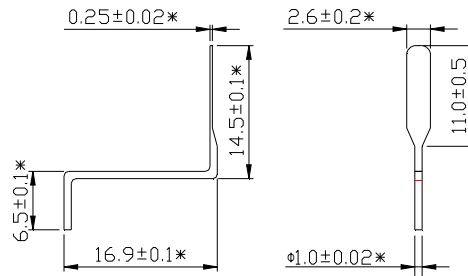
HC06



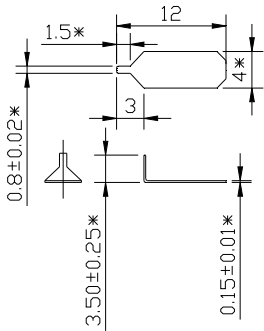
HC07



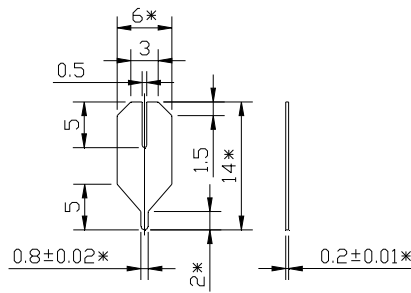
HC11(NC-B0701C)



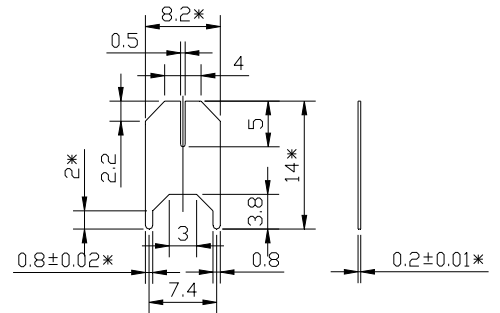
HC12



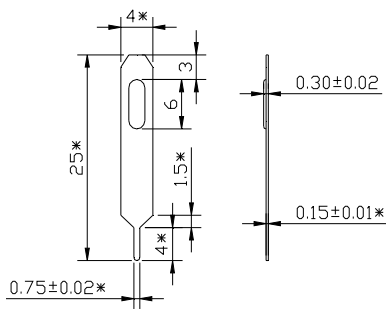
HC18(N3啤弯)



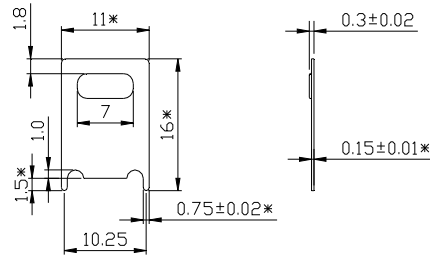
HC19



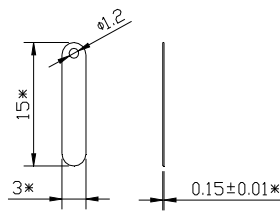
HC20



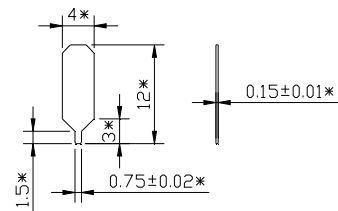
NC-E0101



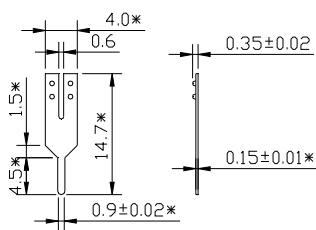
C3(NC-E0105C)
(厚0.15mm)



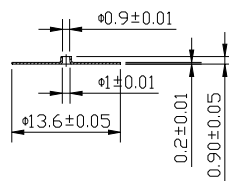
15x3椭圆引片



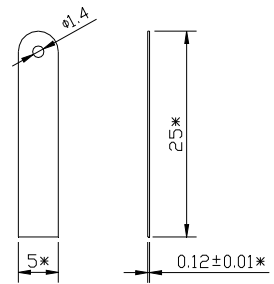
N3(NC-E0119C)
(厚0.15mm)



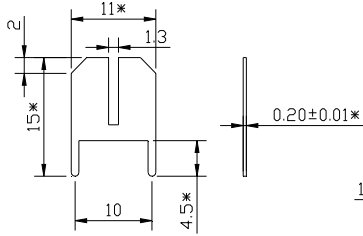
007-024
负极专用插脚
(厚0.15mm)



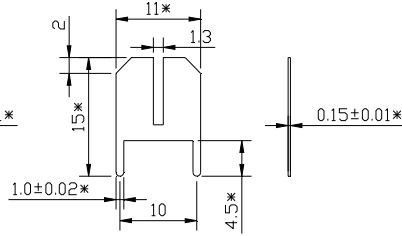
圆形连接片



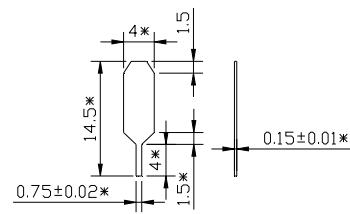
25x5圆头焊片



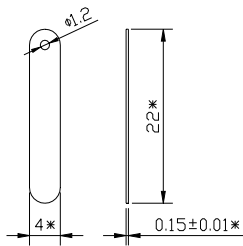
NC-D0202
(厚0.20mm)



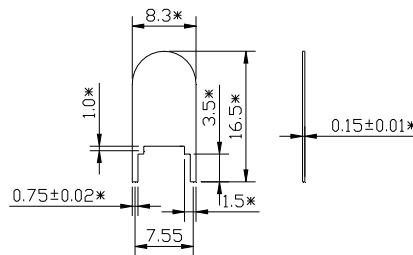
NC-D0202
(厚0.15mm)



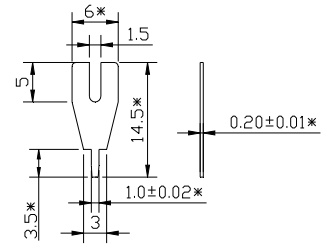
NC-E0119
(厚0.15mm)



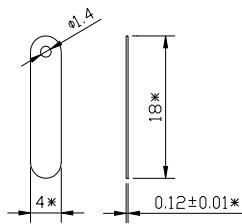
22x4 椭圆焊片



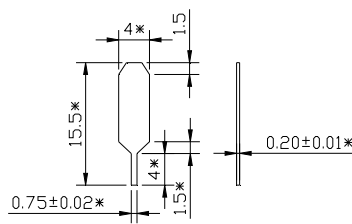
NC-E0113a
(厚0.15mm)



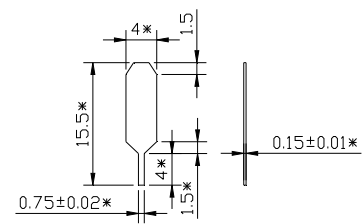
NC-D0103a
(厚0.20mm)



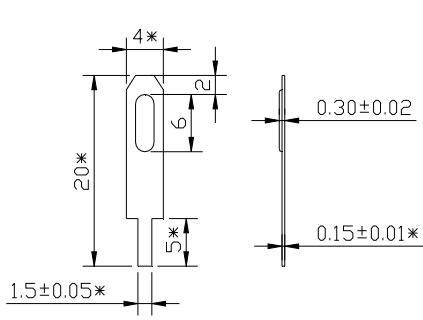
18x4 椭圆焊片



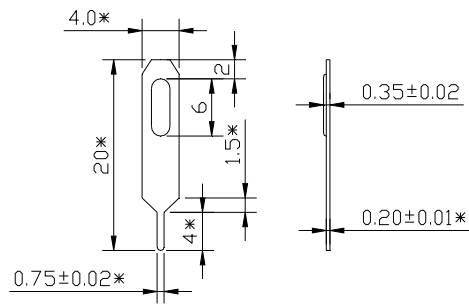
焊片15.5*4*4
(厚0.20mm)



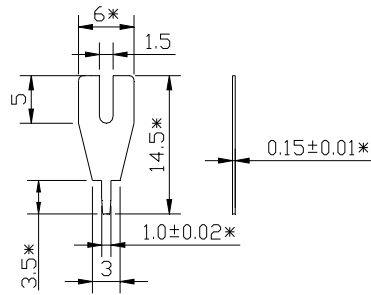
焊片15.5*4*4
(厚0.15mm)



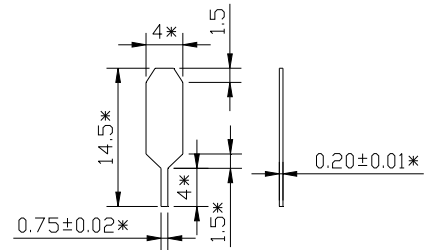
NC-E0108
(厚0.15mm)



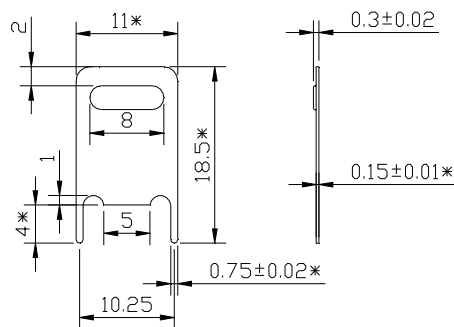
NC-E0102
(厚0.20mm)



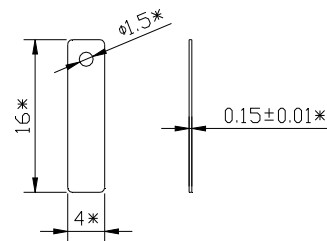
NC-D0103a
(厚0.15mm)



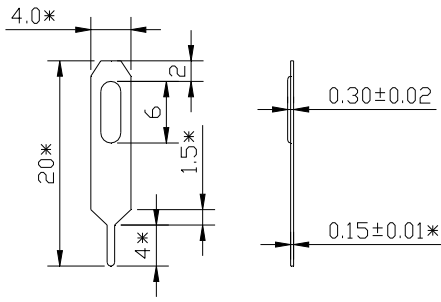
NC-E0119
(厚0.20mm)



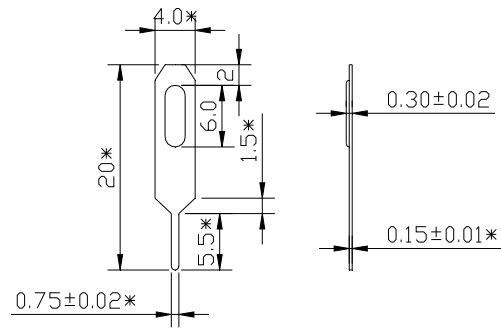
NC-E0105
(厚0.15mm)



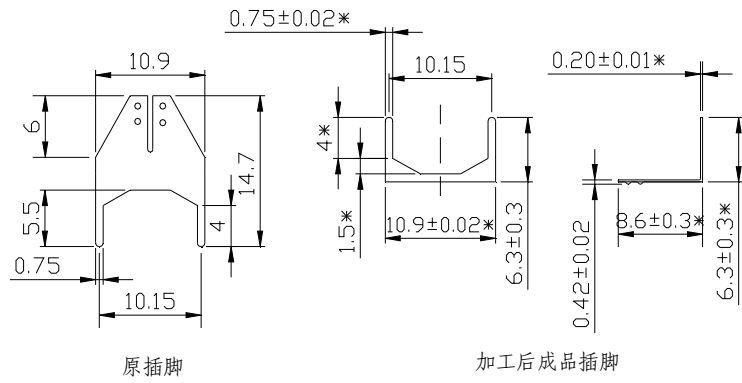
NC-B0603



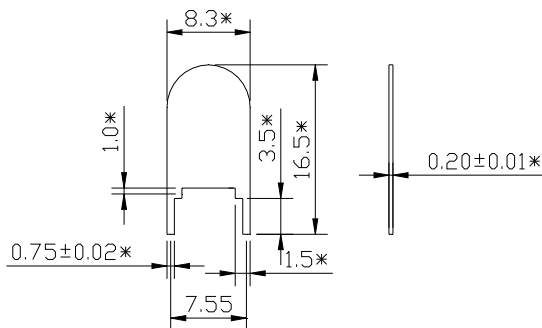
NC-E0102
(厚0.15mm)



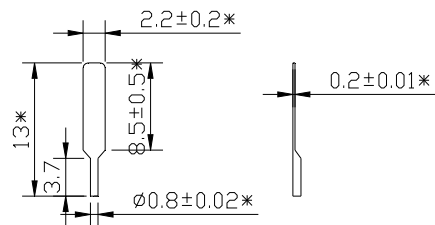
NC-E0102a
(厚0.15mm)



HC04 啤弯



NC-E0113a
(厚0.20mm)



NC-B0701