

Industrial SLC SD Card



Standard Grade: Blue
Industrial Grade: Red.



Features

- Support static and global wear leveling
- S.M.A.R.T Supported
- Intelligent system for error recovery
- Excellent data transfer speed
- Enhanced power cycling
- Golden finger 30u"

R: 20MB
W: 16MB

S.M.A.R.T

Wear
Leveling

SPI Mode
Support

ECC
Engine

Enhanced
Power Cycling

Specifications

Interface	9 pin SD standard
Flash Type	SLC (Single Level Cell)
Density	128MB~32GB
Transfer Mode	SD and SPI mode
Sustained R/W Performance	Read : 20 MB/sec (max.) Write : 16 MB/sec (max.)

Environmental

DC Input	2.7V to 3.6V
Power consumption (Max.)	Read: 40 mA Write: 60 mA Idle: 180 μ A
Operating Temperature	0°C~+70°C (Standard Grade) -40°C~+85°C (Industrial Grade)
Storage Temperature	-55°C~+95°C
Humidity	Relative Humidity: 10-95%, non-condensing
Flash Endurance	100,000 program/erase cycles
MTBF	> 3,000,000 hours
Certification	CE, FCC, RoHS
Warranty	5 years

Mechanicals

Dimension (W x L x H)	24mm x 32mm x 2.1mm
Weight	2.1g \pm 0.05g
Vibration	7 Hz to 2K Hz, , 3 axes
Shock	Duration: 0.5ms, 1500G, 3 axes

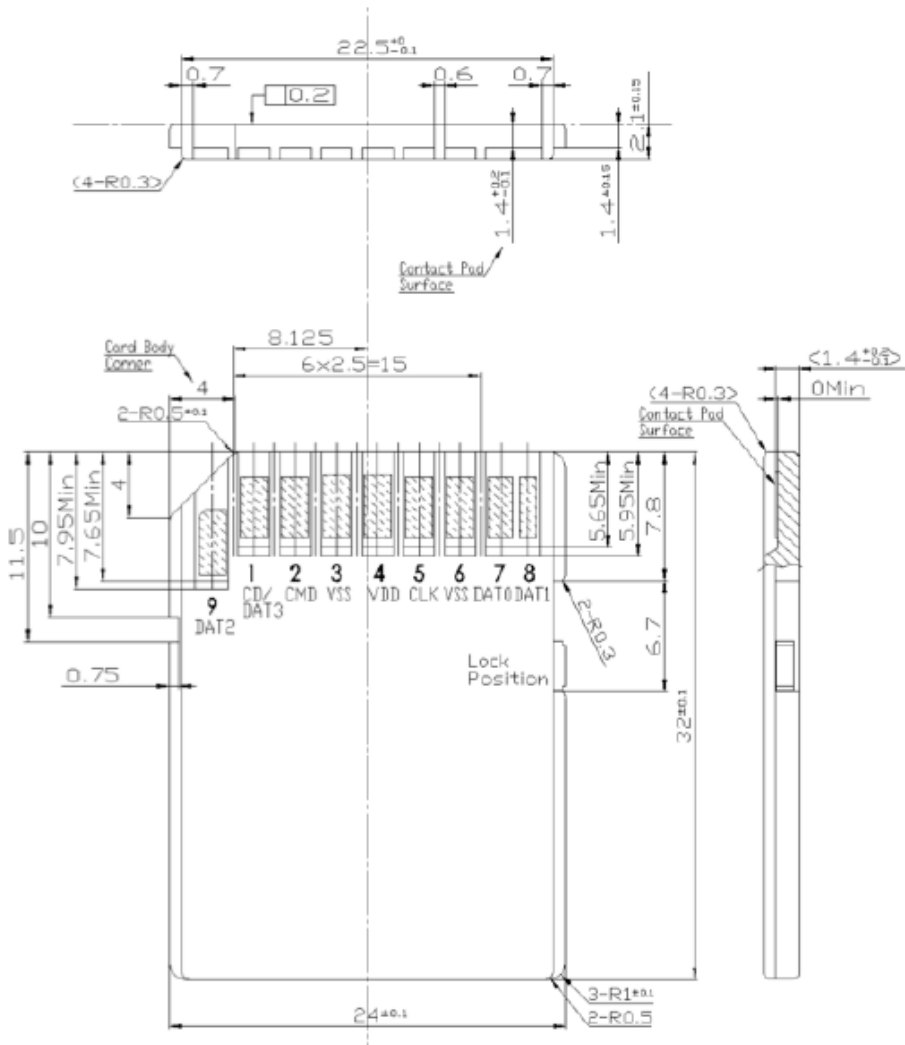
Health monitoring Tool

S.M.A.R.T.	Supported
------------	-----------

Ordering Information

Capacity	Standard Grade	Industrial Grade
128MB(24nm)	DS2A- 128 I81C1B	DS2A- 128 I81W1B
256MB(24nm)	DS2A- 256 I81C1B	DS2A- 256 I81W1B
512MB(32nm)	DS2A- 512 I81C1B	DS2A- 512 I81W1B
512MB(24nm)	DESDC- 512 I81A1C1SB	DESDC- 512 I81A1W1SB
1GB(32nm)	DS2A- 01G I81C1B	DS2A- 01G I81W1B
1GB(24nm)	DESDC- 01G I81A1C1SB	DESDC- 01G I81A1W1SB
2GB(32nm)	DS2A- 02G I81C1B	DS2A- 02G I81W1B
2GB(24nm)	DESDC- 02G I81A1C1SB	DESDC- 02G I81A1W1SB
4GB(24nm)	DS2A- 04G I81C1B	DS2A- 04G I81W1B
8GB(24nm)	DS2A- 08G I81C1B	DS2A- 08G I81W1B
16GB(24nm)	DS2A- 16G I81C1B	DS2A- 16G I81W1B
32GB(24nm)	DS2A- 32G I81C1B	DS2A- 32G I81W1B

Mechanical Dimension



Tolerance ± 0.15

DESIGN • SERVICE • QUALITY • DELIVERY