

W96 - L96 - H61.5 (mm)
 Rth 1.45 °C/W - Power Pd 34W

[MORE PRODUCT DETAILS](#)

CoolBlock® SQ-01 2x2MX Square Pin Fin LED Cooler

Accessories

Lens



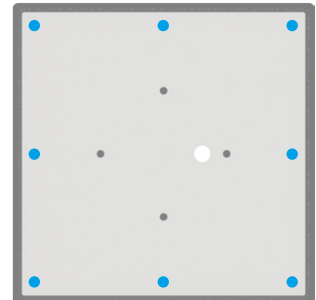
Ledil was from day one the driver behind the 2x2MX platform. In the mean time they offer a wide range of lenses, both in PMMA as in Silicone, for higher temperatures, all compatible with the 2x2MX values.

You can find as well assymmetric beam angles for street or outdoor high mast applications, as well as symmetric angles for high bay lighting.

[Click here to get more info about Ledil 2x2MX family.](#)

Mounting indicator marks overview

With 8 screws evenly spread over the border area, the 2x2MX mechanics in combination with a gasket leads to an IP67 waterproof sealing between optics and LED cooler.



Ledil Strada 2x2MX lenses

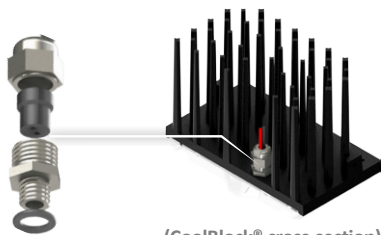
Model names

- CS14632_STRADA-2x2MX-DWC
- CS14713_HB-2x2MX-W
- CS14764_STRADA-2x2MX-VSM
- CS14840_HB-2x2MX-M

Mounting

- Direct mounting with 8 screws M3 x 10mm
- Blue indicator marks

Cable gland



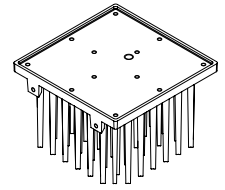
(CoolBlock® cross-section)

Cable feed-through

Since your 2x2MX LED board is already waterproof sealed by the lens, the only critical part left over to obtain a full waterproof stand-alone engine is the cable feed-through. With this dedicated developed cable gland you can seal any 2 wire pas-through with an IP67 rate.

Model names

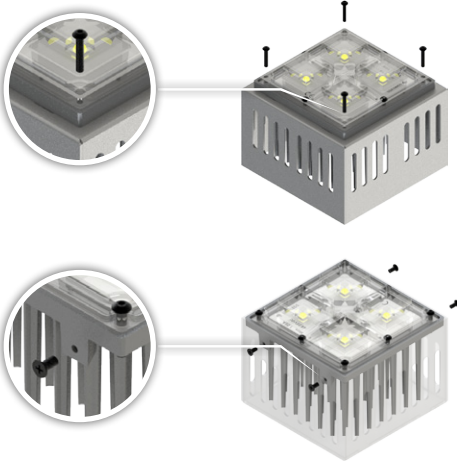
- CoolConnect® Gland 2-pole 01
- (In-house potting service available)



CoolBlock® SQ-01 2x2MX Square Pin Fin LED Cooler

Accessories

Chassis



Chassis mount options

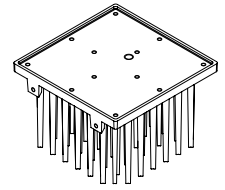
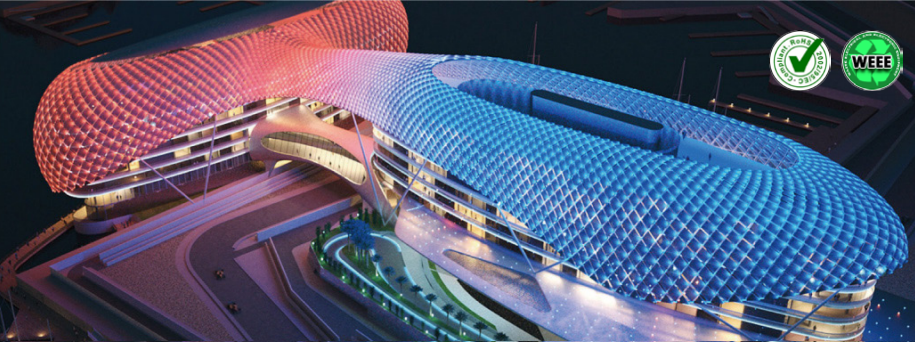
Front mounting

Use 4 screws M3 with a minimum length of 16mm on the corners of the lens for front mounting towards the chassis. Be aware of the maximum screw torque in order not to damaged the lens.

Side mounting

The CoolBlock® SQ-01 is foreseen from 4 mounting pads on the sides. Use 4 screws M3 with a minimum length of 6mm to mount towards the chassis.

CoolConnect® M3 button head screws in SUS304 stainless steel with black zinc plating are available from stock in various lengths.

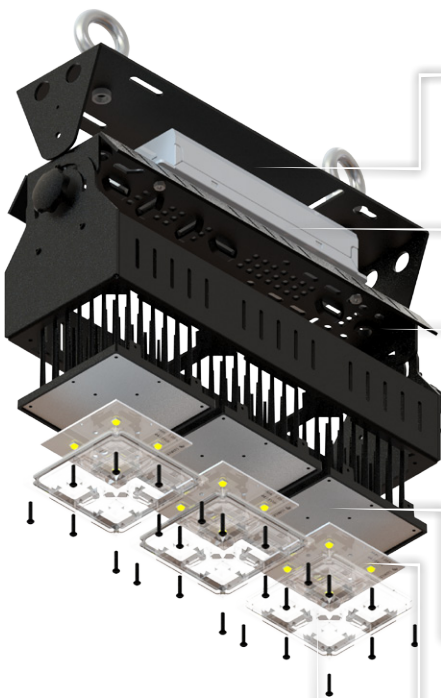


CoolBlock® SQ-01 2x2MX Square Pin Fin LED Cooler

Accessories

Mounting kits ready-to-go

CoolBeam® SQ3-01



Mount bracket

LED driver

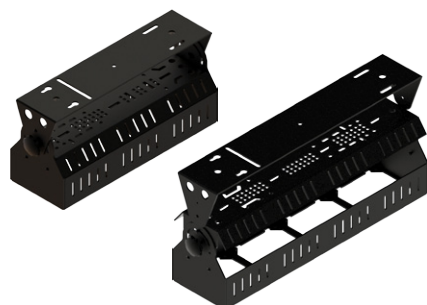
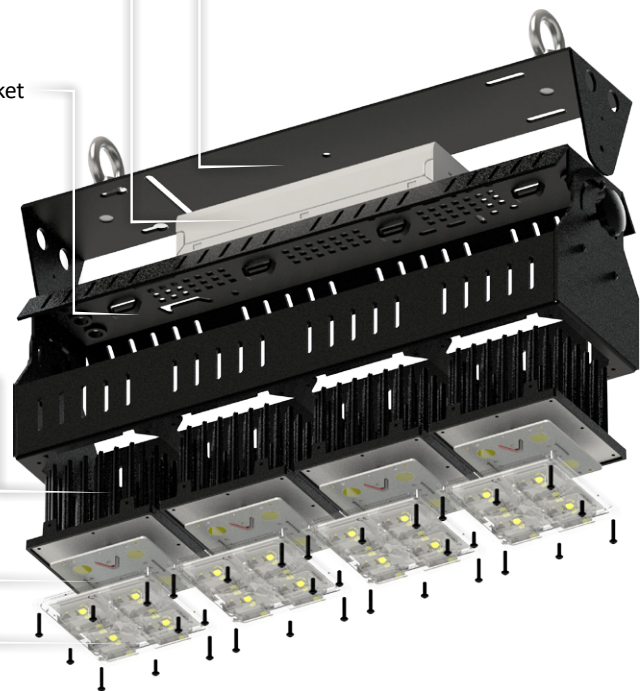
PSU bracket

CoolBlock®
SQ-01 2x2MX

2x2MX
LED engines

Ledil Strada
2x2MX IP67 lens

CoolBeam® SQ4-01



CoolBeam® SQ series

Patented fixture kit accommodating 3 or 4 CoolBlock® LED engines
For industrial flood lights or high bay designs up to 16,000 lumen
Smart PSU bracket for drivers of Mean Well, Inventronics, Osram,...
Various wall mount and suspended mounting options
For more details please see [CoolBeam® datasheet](#)

Model names

- CoolBeam® SQ3-01
- CoolBeam® SQ4-01