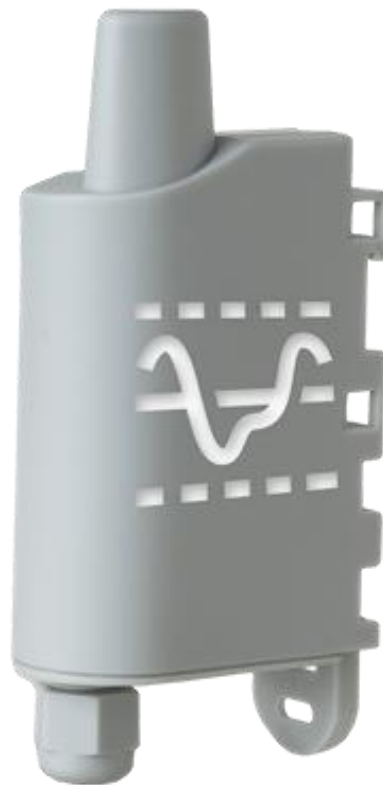


Charakterystyka techniczna Adeunis LoRaWAN Analog (ARF8190BA)



Parameters	Value
Supply voltage	Nominal 3.6V
Power supply	Removable battery version: SAFT LS14500
Maximum supply	90mA
Working temperature	-25°C / +70°C
Dimensions	105 x 50 x 27mm
Weight	70g
Casing	IP 67
Radio standards	EN 300-220, EN 301-489, EN 60950
LoRaWAN zone	EU 863-870 MHz
Transmission power	14 dBm
Applicative port of the product (downlink)	1

JM elektronik sp. z o.o.
ul. Karolinki 58, 44-100 Gliwice

Zakład Produkcyjny
ul. ELZAB 1
(dawniej Kruczkowskiego 39)
41-813 Zabrze

SZJ: ISO 9001:2015
SZŚ: ISO 14001:2015

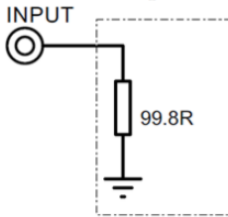
KRS: 0000416117
NIP: 6312645365

e-mail: jm@jm.pl
telefon: +48 32 339 69 01

1.4.3 Physical interface characteristics

1.4.3.01 4-20mA interfaces

The schematic diagram of the 4-20mA interfaces is the following:



Absolute maximum values		Units
Minimum input current	0	mA
Maximum input current	30	mA

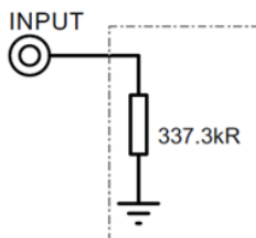
Electrical characteristics		Unité
Minimum input current	4	mA
Maximum input current	20	mA
Equivalent input impedance	99,8 (+/-0,1%)	Ω

12-bit analog input resolution

Values higher than the absolute maximum would damage the product.

1.4.3.02 0-10V interfaces

The schematic diagram of the 0-10V interfaces is the following:



Absolute maximum values		Units
Minimum input voltage	0	V
Maximum input voltage	15	V

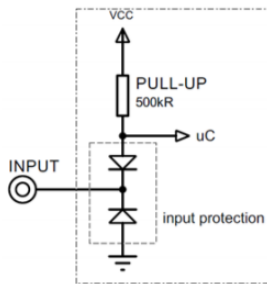
Electrical characteristics		Units
Minimum input voltage	0	V
Maximum input voltage	10	V
Equivalent input impedance	337,3 (+/-0,2%)	kΩ

12-bit analog input resolution

Values higher than the absolute maximum would damage the product.

1.4.3.03 Digital interfaces

The schematic diagram of the digital interfaces is the following:



Absolute maximum values		Units
Minimum input voltage	- 0,7	V
Maximum input voltage	+50	V

Electrical characteristics		Units
Minimum input voltage	0	V
Maximum input voltage	24	V
Equivalent input resistance	500	kΩ
Input frequency	10	Hz
High input level current consumption	0	μA
Low input level current consumption	6	μA